



MONTHLY MEMBERSHIP PROGRESS REPORT

District A 3

Results as of: 07/31/2018

GMT: CHRIS LEWIS

LOCATION ONTARIO

GMT CA

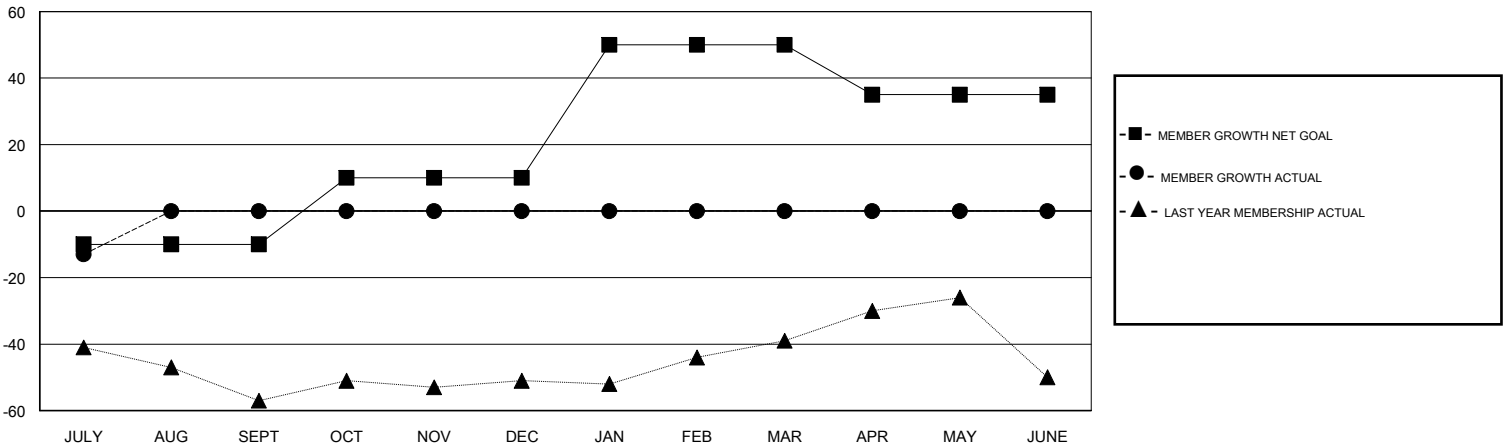
Clubs			
RESULTS FOR 2018-2019			
QUARTER	NEW CLUB GOAL	NEW CLUBS	DROPPED CLUBS
JULY/AUG/SEPT	1	0	0
OCT/NOV/DEC	0	0	0
JAN/FEB/MAR	0	0	0
APR/MAY/JUNE	0	0	0

Members			
RESULTS FOR 2018-2019			
QUARTER	MEMBER GROWTH NET GOAL	MEMBER GROWTH ACTUAL	DROPPED MEMBERS ACTUAL (including transfers)
JULY/AUG/SEPT	-10	5	14
OCT/NOV/DEC	20	0	0
JAN/FEB/MAR	40	0	0
APR/MAY/JUNE	-15	0	0

GOALS AND ACTUAL NEW CLUBS CUMULATIVE



GOALS AND ACTUAL MEMBERS CUMULATIVE



DROPPED CLUBS: 0	1 CLUBS OF 50 ADDED 1 OR MORE NEW MEMBERS	<u>GENDER DISTRIBUTION</u> MALE 795 (62.11%) FEMALE 485 (37.89%) Women Percentage Fiscal Year Goal: 4%
<u>DROPPED MEMBERS</u> DECEASED 2 CLUB CANCELLED 0 OTHER 12 TOTAL 14	CLICK HERE FOR CUMULATIVE MEMBERSHIP DATA	TOTAL FAMILY UNIT MEMBERS 346 FAMILY MEMBERS PAYING HALF DUES 179